

# Teenage Driving Patterns in NC: Pre- and Post-GDL

Laura Sandt  
Robert Foss

University of North Carolina at Chapel Hill

TRB Young Driver Subcommittee Mid-year Meeting

July 15-16, 2010



# Data Set

---

- Pre- and Post- GDL program
- 24-hr period of trips (all days of week)
- Multi-stage cluster sampling in NC
- Parent and teen (15-18 yrs) interviews (2,600 pairs total)
- Collected in May: 1998, 2000, 2001



# License Types in NC

- Pre-GDL: No restrictions
- Level 1: Supervision required
- Level 2: 9 pm - 5 am restriction
- Level 3: No restrictions





# Measures of Driving Exposure

---

## Base Measures:

- Distance (miles per trip)
- Duration (minutes per trip)
- Trip count (4,991 teen driver car trips)

## Other Characteristics of Exposure:

- Passenger conditions
- Day vs night
- Weekday vs weekend
- Destination



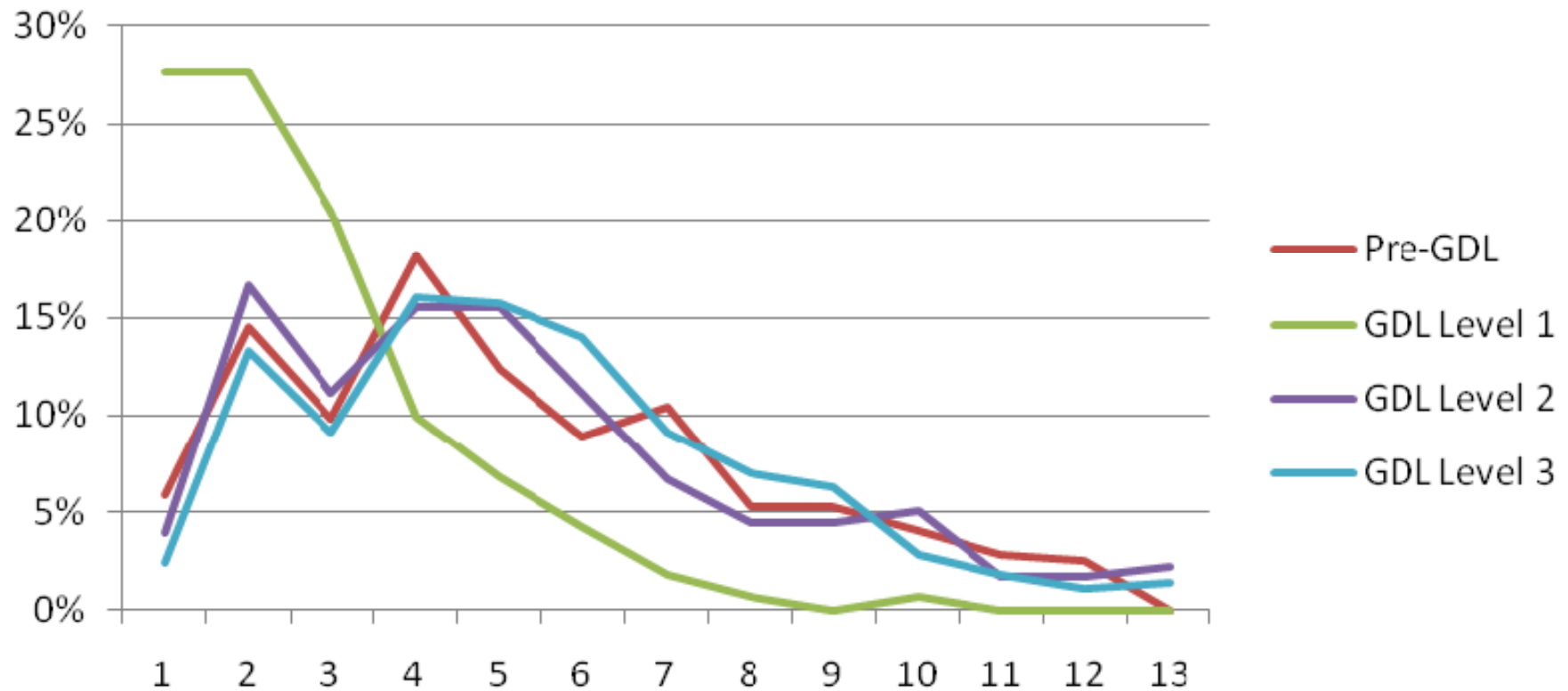
# Basic Exposure: Trips Yesterday

	<b>Pre-GDL</b> (1,671)	<b>GDL 1</b> (758)	<b>GDL 2</b> (930)	<b>GDL 3</b> (1,537)
Median trip dist (mi)	6	5	5	5
Median trip dur (min)	10	10	10	10
Mean # of trips pp	5.10	2.70	5.09	5.25
% night trips	16%	8%	9%	18%
% weekend trips	24%	34%	29%	28%



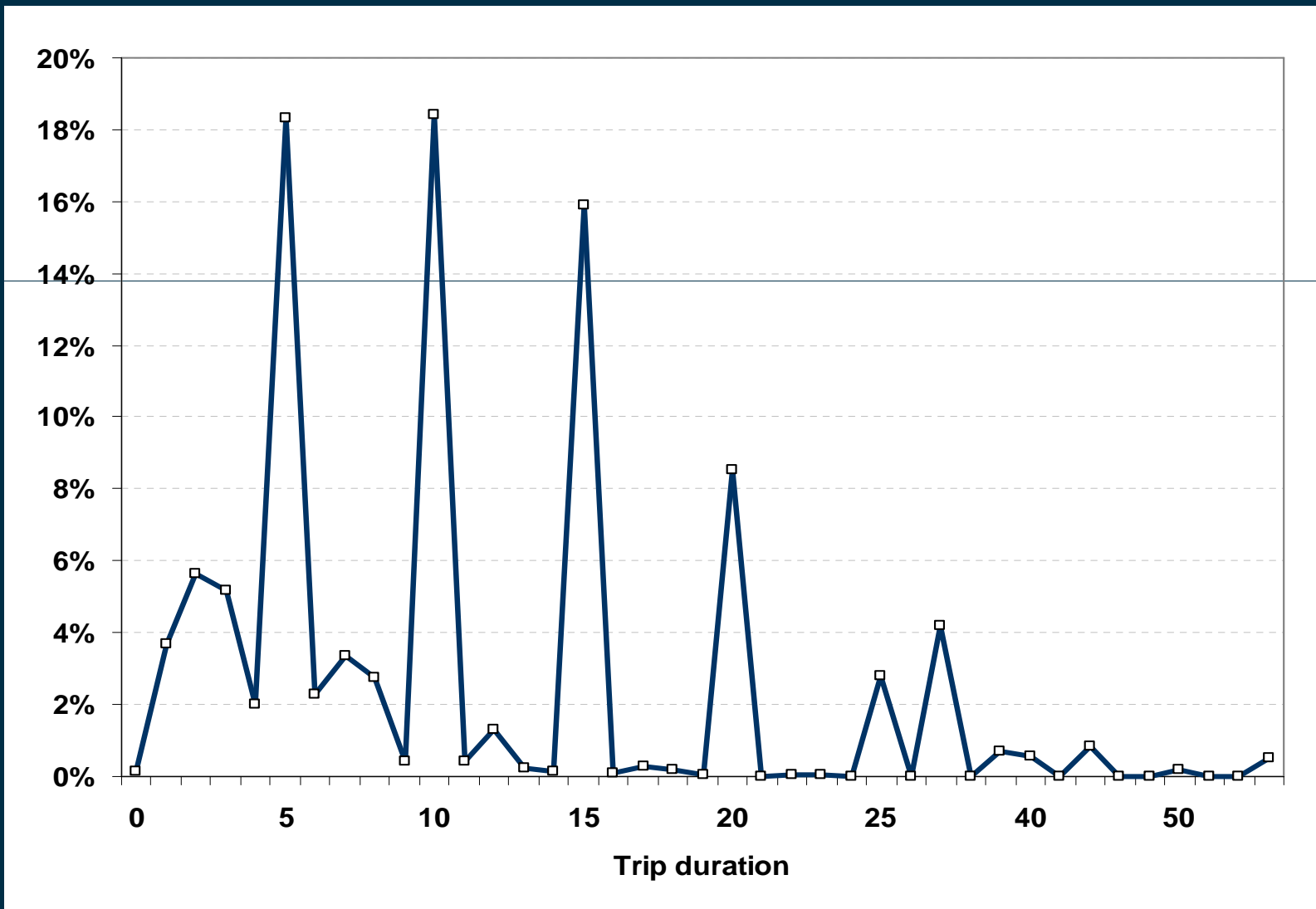
# Trip Count Distribution

## Number of Car Trips Driven Yesterday



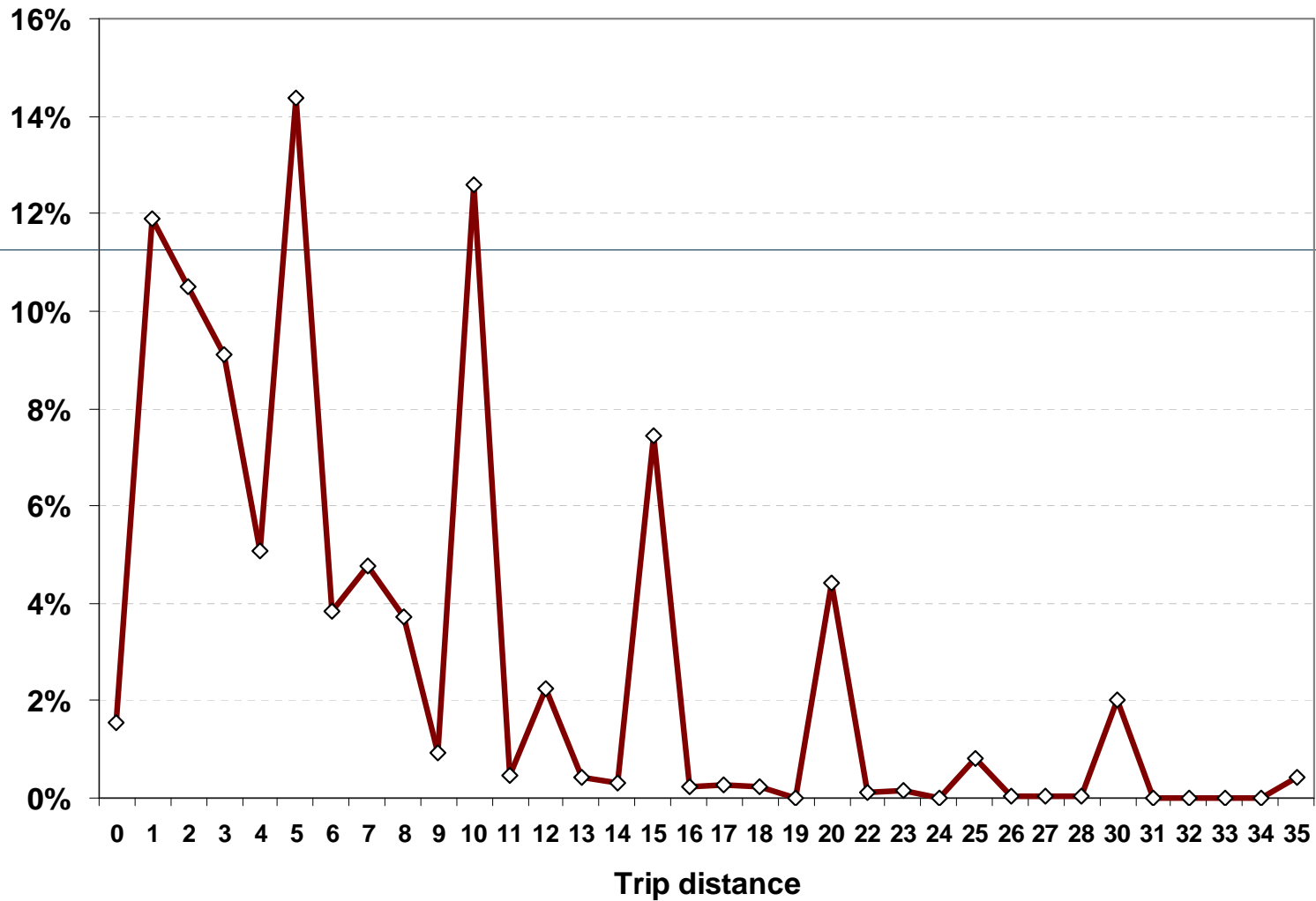


# Reported Trip Duration (minutes)





# Reported Trip Distance (miles)





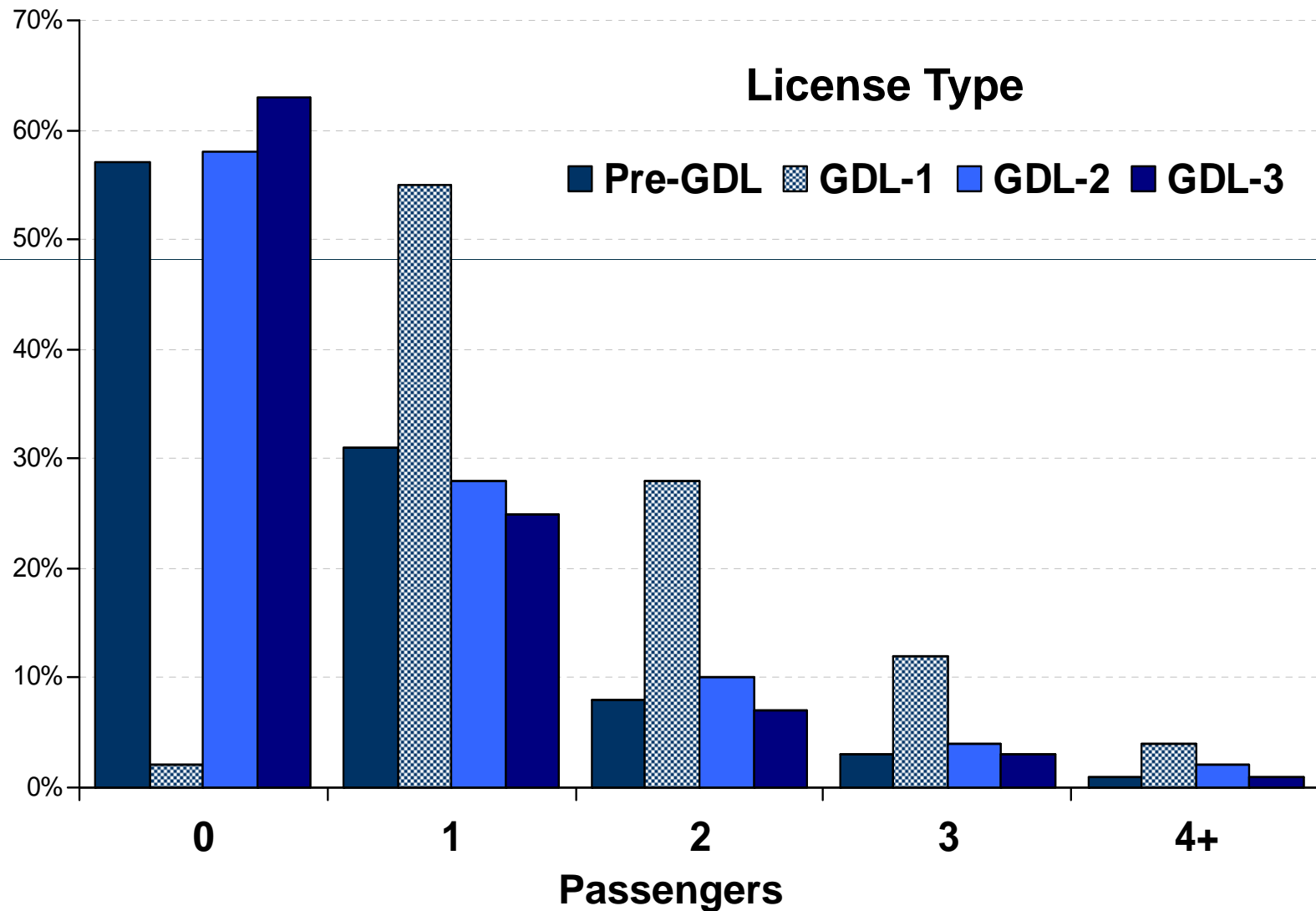


# Passengers of Teen Drivers

	<b>Pre-GDL</b> (1,671)	<b>GDL 1</b> (758)	<b>GDL 2</b> (930)	<b>GDL 3</b> (1,537)
No passenger	57%	2%	58%	63%
1 teen only	24	2	21	20
2+ teens only	8	3	7	7
1 adult only	6	52	5	4
Other	6	41	9	6



# Trips by # Passengers & License Type





# Trip Destination

	<b>Pre-GDL</b> (1,671)	<b>GDL 1</b> (758)	<b>GDL 2</b> (930)	<b>GDL 3</b> (1,537)
Home	37%	36%	33%	35%
Social/recreation	31	24	34	33
Shop/errands	12	26	17	13
Work	10	4	8	11
School	9	3	6	5
Other	2	7	3	4



# Discussion

---

- Better sense of distribution of exposure and “risk exposure”
- Implications for GDL policy-makers?
- Next steps – NHTSA pilot project

