

All you need to know about Teen Driving Exposure

Allan Williams

Marstons Mills Assoc.

Jim Hedlund

Highway Safety North

TRB Young Driver Workshop

Woods Hole, MA

July 15, 2010

"One Of The Most Entertaining Movies Of The Year!"

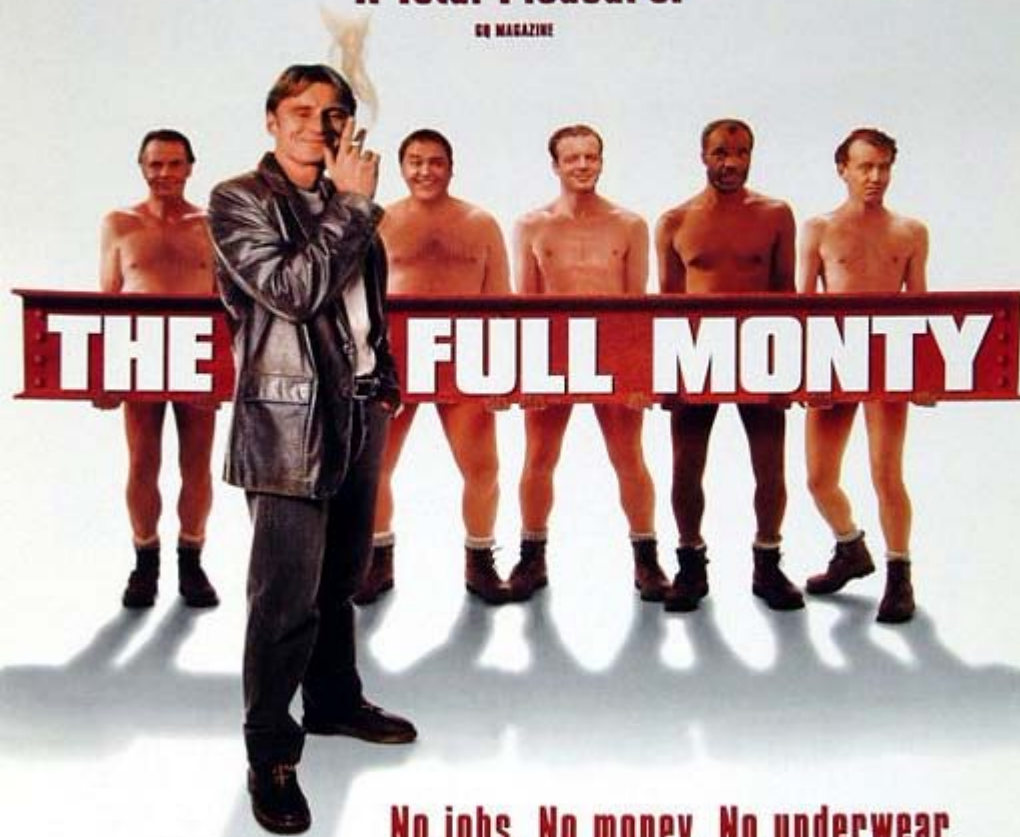
SICKEL & ERBET

"A Smart, Funny Gem!"

NO MAGAZINE

"A Total Pleasure!"

GO MAGAZINE



No jobs. No money. No underwear.

FOX SEARCHLIGHT PICTURES PRESENTS A REDWAVE FILMS PRODUCTION "THE FULL MONTY" ROBERT CARLYLE TOM WILKINSON MARK ADDY
MUSIC BY ANNE DUDLEY PRODUCTION DESIGNER LESLEY STEWART EDITOR DAVID FREEMAN NICK MOORE EXECUTIVE PRODUCERS MAX GOTTLIEB ANDREW HARRIS JOHN DE BORMAN B.S.C.
SCREENPLAY BY SIMON BEAUFOY PRODUCED BY UBERTO PASOLINI DIRECTED BY PETER CATTANEO
www.foxsearchlight.com

What do we mean by exposure data?

- A measure of crash opportunity for drivers
- A denominator for driver crash rates
- For us: must identify teen drivers
- To be really useful, break out by other things:
 - driver age
 - time of day
 - road type
 - etc.

Why do we need exposure data?

- To estimate and compare crash risk
 - crashes/VMT for 16-year old drivers v 17-year-old
- Identify high-risk situations
 - teen driver crashes/VMT at night v day, or by hour at night
- Develop countermeasures
 - GDL passenger restrictions
- Evaluate programs
 - GDL cell phone restrictions
- Understand why programs are or are not effective
 - does GDL make safer drivers or just reduce driving

What are the main types of exposure data?

- Population – census counts
- Licensed drivers
 - by license type
- VMT
 - break out by time of day, road type, etc.
- Hours of driving
 - similar breakouts
- Induced exposure
 - at-fault v not-at-fault drivers in crash data

Where do we get exposure data?

- Administrative records
 - census, licensure
- Surveys – ask drivers what they do
 - hours; perhaps times, road types, passengers, etc.
- Observations
 - trip records, EDRs, event videos
 - full naturalistic
- Induced
 - crash data

What are important exposure data needs?

- GDL requirements and components
 - minimum ages
 - holding period length
 - supervised driving requirements
 - intermediate license restrictions
- Driver ed benefits or disbenefits
- Licensing age
- ...